



**PODLASIE  
CUP**

**MTBO**

**26-28.04.2019**

**SUWAŁKI**

## Bulletin

- Organizer:** Polish Orienteering Federation
- Co-organizers:**
- Podlaski District Orienteering Federation
  - Suwałki Forest District
  - MTB Club Suwałki
- Patron:** Director of the Regional Białystok Forest District - Andrzej Józef Nowak
- Honorary Committee:**
- Acting Director of the Wigry National Park - Maciej Kamiński
  - Suwałki Forest District Manager - Wojciech Rodak
  - Director of Polish Airmen Elementary School in Płociczno - Tartak - Katarzyna Gałaszewska
  - President of the Polish Orienteering Federation - Krzysztof Urbaniak
- Organizing Committee:**
- Event Director - Stefan Niczyporuk
  - Head Referee - Jan Cegielka S-1
  - Maps - Jan Cegielka, Piotr Sierzputowski
  - Courses - Jan Cegielka BT-1
  - Logistics - Tomasz Zubowicz
  - IT - Tomasz Michalak
- Rank of races:** All races will be ranked under Podlasie Cup classification. Mass-start, sprint (27th April 2019), long distance are classified as Polish Club Championships and Polish Foresters' Championships. Sprint (27th April 2019) and mass-start are part of the Polish Championships ranking.
- Event Center:**
- Polish Airmen Elementary School in Płociczno-Tartak
  - GPS: 54° 1'20.363"N, 22° 59'3.624"E
  - [www.plociczno.pl](http://www.plociczno.pl)
- Event Office:**
- opening hours of the Event Office at the Event Center
    - Friday: 14:00 - 16:00
    - Saturday: 8:00 - 9:00, 18:00 - 22:00
- Program:**
- sprint, 26th April 2019 (Friday)**
- 16:30 - start of a first competitor
- mass-start, 27th of April 2019 (Saturday)**
- 10:00 - mass start
- sprint, 27th April 2019 (Saturday)**
- 16:30 - start of a first competitor
  - 20:00 - prize giving ceremony at the Event Center
- long distance, 28th April 2019 (Sunday)**
- 10:00 - start of a first competitor
  - 13:00 - prize giving ceremony (will take place at the Event Center of long distance)

## Start location:

### sprint, 26th April 2019 (Friday)

- GPS: 54°03'47.3"N 22°56'40.3"E
- address: Gospodarstwo Szkótkarskie Nadleśnictwa Suwałki, street Wojska Polskiego 75A, Suwałki

### mass-start, 27th of April 2019 (Saturday)

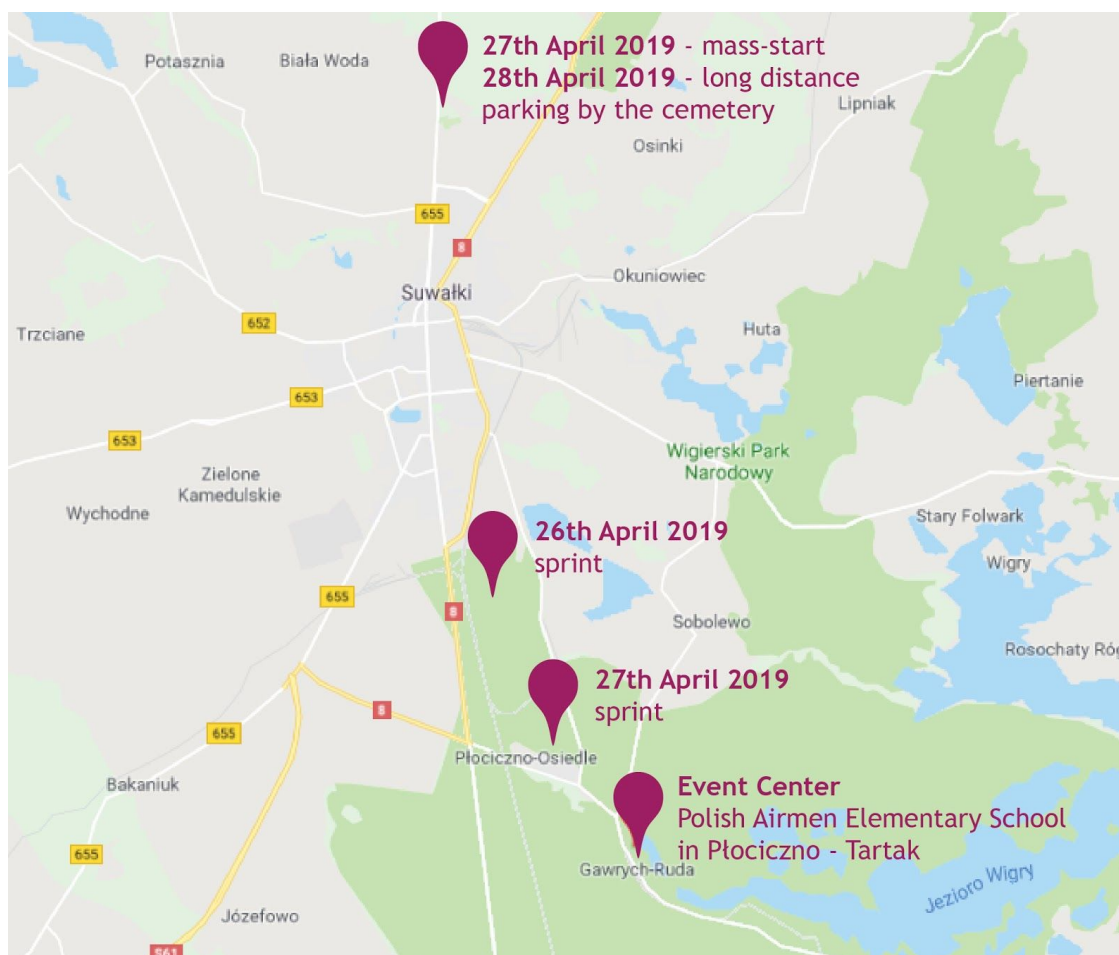
- GPS: 54°8'27.549"N, 22°55'53.028"E, Mikołaj Rej street; 655 national road - parking at the cemetery

### sprint, 27th April 2019 (Saturday)

- GPS: 54°2'13.851"N, 22°57'48.254"E

### long distance, 28th April 2019 (Sunday)

- GPS the same as mass-start





# PODLASIE CUP

# MTBO

26-28.04.2019

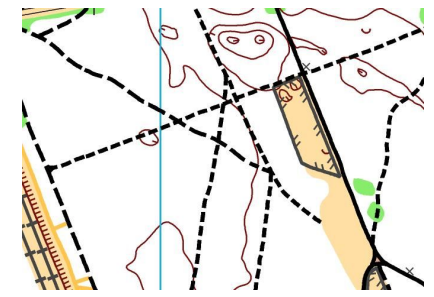
SUWAŁKI

### Maps and terrain description:

- Suwałki Forest and Switzerland, scale 1:7 500, 1:10 000 and 1:15 000, e-2,5 m and e-5,0 m
- MTBO maps update: March 2019
- terrain with developed tracks network
- below fragments of maps:



mass-start, long distance



sprint

### Time keeping system:

Sport Ident Air+ with 50 cm detection range will be used on all events. SI cards can be rented from Organizers.

### Special Rules:

- IOF MTB Orienteering Competition rules 2019
- Riding off the track is allowed.
- Doping is strictly prohibited.

### Prizes:

- medals (for 1st-3rd place), diplomas (1st-6th place) and gifts for winners

### Accommodation:

- at the Event Center in classrooms suitable for 7-12 persons
- necessary own mattress and sleeping bag
- kitchen available for preparing meals
- cost: 10PLN or 2,5EUR/person per night
- location:
  - Polish Airmen Elementary School in Płociczno-Tartak
  - GPS: 54° 1'20.363"N, 22° 59'3.624"E

### Fees:

Name	Fee
entry fee for categories: WM14, OPEN	15PLN or 4EUR/race
entry fee for categories: WM17, WM20	20PLN or 5EUR/race
entry fee for other categories	30PLN or 8EUR/race
SI card rental	3 PLN or 1EUR/race

Inhabitants of Płociczno - Tartak and Suwałki are guaranteed a free start after the entry submission.



# PODLASIE CUP

# MTBO

26-28.04.2019

SUWAŁKI

- Entries:** Entry deadline 22nd April 2019.  
All entries can be done via [www.orienteering.waw.pl](http://www.orienteering.waw.pl) or submitted to Jan Cegielka: [jan\\_cegielka@sggw.pl](mailto:jan_cegielka@sggw.pl).  
In the entry please indicate demand for accommodation, excursion, SI number.  
Please contact [jan\\_cegielka@sggw.pl](mailto:jan_cegielka@sggw.pl) if you have questions and problems concerning entries.
- Resignations:** Competitors registered, not present at the event, cover 50% of the entry fee.
- Details for payment:** All payments are to be made at the Event Office.
- Official website:** [suwalki\\_2019.orienteering.waw.pl](http://suwalki_2019.orienteering.waw.pl)

**Organizers:**



**Partners:**



**Media services:**

